

'Yummy Christmas' Interactive Z-Fold Card

Made with Stampin' Up! ® Stamps and Accessories.

Written and photographed by Bronwyn Eastley, Independent Stampin' Up! ® Demonstrator, Australia.



Supplies:

Stamp Sets: Yummy Christmas, Cuckoo For You, This Little Piggy (clouds)

Ink: Memento Tuxedo Black, Real Red, Shaded Spruce

Stampin' Blends: Shaded Spruce, Real Red, Daffodil Delight, Cajun Craze, Soft Suede, Crumb Cake, Cherry Cobbler, Old Olive, Flirty Flamingo, Call Me Clover, So Saffron, Gray Granite + Black Stampin' Write Marker

Card Stock: Coastal Cabana, Thick Whisper White, Sparkle Glimmer Paper

DSP: Let It Snow Specialty

Dies: Cuckoo Clock, Stitched Rectangles

Punches: 2" Circle (or smaller)

Tools & Adhesives: Multipurpose Liquid Glue, Stampin' Dimensionals, Paper Trimmer, Die Cutting Machine, Paper Snips, Clear Wink of Stella Glitter Brush



Images © Stampin' Up! ®

Tutorial written and photographed by Bronwyn Eastley, Independent Stampin' Up! ® Demonstrator, Australia - <http://addinktivedesigns.com> This tutorial may not be reproduced, shared or resold in paper or electronic form (eg: Email, message, groups, pages, blogs, videos etc). However, Stampin' Up! ® Demonstrators/Paper Craft Tutors may use this tutorial as a printed reference at face to face events. All stamped images are © Stampin' Up! ®. Published November, 2019.

Cutting Measurements:

A4 -

Card Base (Coastal Cabana) -

(H)10.5cm x (W)29.6cm

DSP (Let It Snow Specialty) -

(H)10cm x (W)6.9cm (x2), (H)10cm x (W)14.3cm

Snow Bank (Sparkle Glimmer Paper) -

(H)1.5cm x (W)6.9cm (x2), (H)1.5cm x (W)14.3cm

Letter Size -

Card Base (Coastal Cabana) -

(H)4-1/4" x (W)11"

DSP (Let It Snow Specialty) -

(H)4" x (W)2-1/2" (X2), (H)4" x (W) 5-1/4"

Snow Bank (Sparkle Glimmer Paper) -

(H)3/4" x (W)2-1/2" (x2), (H)3/4" x (W)5-1/4"

Instructions:

Step 1: Score the Coastal Cabana Card Base along the width at -

- 7.4cm and 14.8cm or
- 2-3/4" and 5-1/2"

L-R: Mountain Fold the first score line, Valley Fold the second.

Step 2: Using Memento Tuxedo Black Ink, stamp two Gingerbread House images onto Thick Whisper White Card Stock. Die-cut one complete house. Colour the house using a variety of Stampin' Blends (See detailed description for suggested colours after Step 16). Add Clear Wink of Stella to the 'snow'.

Step 3: Using Paper Snips or a Craft Knife, carefully cut out the front door of the house inside of the snow and the Gingerbread Man's hand and foot.

Step 4: Punch out a 2" Circle from a scrap of Crumb Cake Card Stock. Apply glue around the edge of the circle and attach to the back of the gingerbread house.

Step 5: Fussy cut and colour a Gingerbread Man from the other stamped house image and glue to the inside of the door as shown.



Tutorial written and photographed by Bronwyn Eastley, Independent Stampin' Up! ® Demonstrator, Australia - <http://addinktivedesigns.com> This tutorial may not be reproduced, shared or resold in paper or electronic form (eg: Email, message, groups, pages, blogs, videos etc). However, Stampin' Up! ® Demonstrators/Paper Craft Tutors may use this tutorial as a printed reference at face to face events. All stamped images are © Stampin' Up! ®. Published November, 2019.

Step 6: Tack down the Gingerbread House to the large piece of DSP and cut out the two slits using the positioning die from the Cuckoo Clock Dies. Re-attach the house to the DSP using Stampin' Dimensionals, keeping them away from where the push/pull mechanism needs to go.

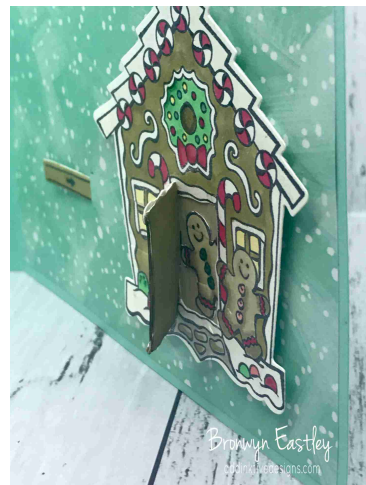
Step 7: Die-cut a push/pull mechanism from Thick Whisper White Card Stock and stamp the arrow to the lower edge with Tuxedo Black Ink. Colour with a Light Soft Suede Stampin' Blend.

Step 8: Push the mechanism through both slits as shown.

Step 9: Ink up the house stamp around the door area but remove the ink from the edges of the Gingerbread Man's hand and foot before stamping onto a scrap of Thick Whisper White Card Stock with Tuxedo Black Ink. Fill in the missing vertical lines of the door with a Black Stampin' Write Marker. Fussy cut out a complete door with snow. Repeat so you have two individual stamped doors.

Step 10: Colour the back of one door with a Light Soft Suede Stampin' Blend and colour the front side of the other door using So Saffron and Soft Suede Stampin' Blends and Clear Wink of Stella on the snow.

Step 11: Glue the two doors together with the end of the push/pull mechanism sandwiched between them (stamped sides facing up). Check to see that the mechanism, when pushed, opens the door to the Gingerbread House.



Tutorial written and photographed by Bronwyn Eastley, Independent Stampin' Up! ® Demonstrator, Australia - <http://addinktivedesigns.com> This tutorial may not be reproduced, shared or resold in paper or electronic form (eg: Email, message, groups, pages, blogs, videos etc). However, Stampin' Up! ® Demonstrators/Paper Craft Tutors may use this tutorial as a printed reference at face to face events. All stamped images are © Stampin' Up! ®. Published November, 2019.

Step 12: Glue on the DSP panels to each section of the card base.

Step 13: Using a pair of Paper Snips, cut out curved 'snow banks' along the top of the three Sparkle Glimmer pieces. Glue each 'snowy' panel to the lower edge of the card base as shown.

Step 14: Stamp the sentiments from the stamp set, 'Yummy Christmas' with Shaded Spruce and Real Red Ink onto Whisper White Card Stock. Cut out using the appropriately sized Stitched Rectangle Die. Glue to the centre of the card.

Step 15: Stamp a variety of images from the Yummy Christmas and Cuckoo For You Stamp Sets with Tuxedo Black Ink onto Thick Whisper White Card Stock. Colour with Stampin' Blends and die-cut with coordinating dies.

Step 16: Attach them to the card base with glue and/or Mini or Regular Stampin' Dimensionals.

Card Front: Suggested Colours -

- Christmas Tree (Shaded Spruce, Real Red, Daffodil Delight, Soft Suede)
- Squirrel (Cajun Craze, Soft Suede, Crumb Cake, Black)

+ Stamp and fussy cut 3 clouds from 'This Little Piggy' Stamp Set (or similar). Colour with a Clear Wink of Stella Glitter Brush. Attach two of them to the card front and one to the card back.



Card Middle: Suggested Colours -

- Holly (Old Olive, Cherry Cobbler)
- Candy/Lollies (Real Red, Flirty Flamingo, Call Me Clover)

Card Back: Suggested Colours -

- Trees (Shaded Spruce)
- Gingerbread House (Soft Suede, Real Red, Call Me Clover, Daffodil Delight, So Saffron, Flirty Flamingo, Crumb Cake, Gray Granite)

Step 17: Stamp the front of the envelope using the tree image from Yummy Christmas with Shaded Spruce Ink.

Finished card will fold 'flattish' and fit inside a standard card size envelope.

I really appreciate you purchasing my tutorial and supporting me in my creative business. Please respect the time and creativity that has gone into producing this project/ PDF; when posting your creations on-line inspired by my tutorial, out of 'netiquette', please link back to my website to give credit. Thank you.

<http://addinkivedesigns.com/shop/>



Tutorial written and photographed by Bronwyn Eastley, Independent Stampin' Up! ® Demonstrator, Australia - <http://addinkivedesigns.com> This tutorial may not be reproduced, shared or resold in paper or electronic form (eg: Email, message, groups, pages, blogs, videos etc). However, Stampin' Up! ® Demonstrators/Paper Craft Tutors may use this tutorial as a printed reference at face to face events. All stamped images are © Stampin' Up! ®. Published November, 2019.