

'Detailed Bands' Fancy Fold Card

Made with Stampin' Up! ® Stamps and Accessories.

Written and photographed by Bronwyn Eastley, Independent Stampin' Up! ® Demonstrator, Australia.



1. Perennial Essence

Supplies:

Stamp Set: Beautiful Friendship

Ink: Balmy Blue, Mossy Meadow

Card Stock: Thick Whisper White, Gold Foil Sheets

DSP: Perennial Essence

Dies: Detailed Bands, Stitched Rectangles, Seasonal Layers

Punches: Medium Daisy, Leaf

Accessories: Perennial Essence Floral Centers

Tools & Adhesives: Multipurpose Liquid Glue, Tear & Tape Adhesive, Stampin' Dimensionals, Paper Trimmer/Scoring Board, Die Cutting Machine, Craft Knife, Pencil



Images © Stampin' Up! ®

Tutorial written and photographed by Bronwyn Eastley, Independent Stampin' Up! ® Demonstrator, Australia - <http://addinktivedesigns.com> This tutorial may not be reproduced, shared or resold in paper or electronic form (eg: Email, message, groups, pages, blogs, videos etc). However, Stampin' Up! ® Demonstrators/Paper Craft Tutors may use this tutorial as a printed reference at face to face events. All stamped images are © Stampin' Up! ®. Published October, 2019.

Instructions:

Step 1: Cut a piece of Perennial Essence DSP, (H) 5-1/2" x (W) 9".

Step 2: Score along the width at the 3-1/4", 5", 5-1/2" and 7-1/4" marks. L-R: Valley, mountain, mountain, valley fold each score line.

Step 3: Place the larger, Detailed Bands Die along the centre of the scored 1/2" piece and use as a stencil; draw in pencil lines along either side of the upper and lower bands. The white lines in the photo indicate where the pencil marks should go.

Step 4: Remove the die and add horizontal pencil lines as shown in the photo.

1.



2.



3.



4.



Step 5: With a craft knife, cut along the lines to form the two flaps.

Step 6: Die cut a scalloped border using the die from Seasonal Layers.



Step 7: Add some Tear & Tape Adhesive to the underside of the flaps.

Step 8: Die-cut an ornate frame from Gold Foil Sheets using the large Detailed Bands Die. Insert the ends of the 'bands' into both flaps and secure with the Tear & Tape Adhesive.



Back View

5.



6.



7.



8.



Front View

Tutorial written and photographed by Bronwyn Eastley, Independent Stampin' Up! ® Demonstrator, Australia - <http://addinktivedesigns.com> This tutorial may not be reproduced, shared or resold in paper or electronic form (eg: Email, message, groups, pages, blogs, videos etc). However, Stampin' Up! ® Demonstrators/Paper Craft Tutors may use this tutorial as a printed reference at face to face events. All stamped images are © Stampin' Up! ®. Published October, 2019.

Step 9: Punch out 8 daisies using the Medium Daisy Punch from some left-over DSP.

Step 10: Punch out 4 leaves using the Leaf Punch from the reverse side of the DSP.

Step 11: Assemble 4 daisies by gluing 2 punched daisies together, adding a leaf behind each one and sticking a Perennial Essence Floral Center to the middle of each one.

Step 12: Attach 3 of the daisies to the gold frame with Stampin' Dimensionals.

9.



10.



11.



12.



Step 13: Stamp a sentiment from Beautiful Friendship onto some Thick Whisper White Card Stock using Balmy Blue Ink. Cut out the sentiment using a Stitched Rectangle Die and glue to the left-hand side of the card. Using the reverse side of the DSP, cut a sprig of leaves using the die from Detailed Bands. Glue to the lower section of the rectangle.



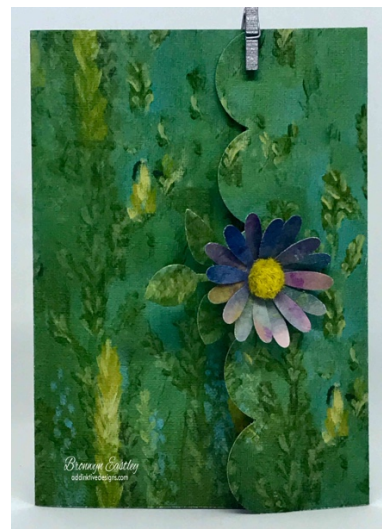
Step 14: Using A Stampin' Dimensional, attach the fourth daisy to the front scalloped edge as shown.

Step 15: Optional: Stamp the front of the envelope using a small stamp from Beautiful Friendship. I used Mossy Meadow Ink and 'stamped off' to create 3 layers of foliage.

13.



14.



15.



Ta Dah! You've completed a fancy fold card using the Detailed Bands Dies. Now try some other variations of this fold using different DSP, stamps and dies.



I really appreciate you purchasing my tutorial and supporting me in my creative business. Please respect the time and creativity that has gone into producing this project/ PDF; when posting your creations on-line inspired by my tutorial, out of 'netiquette', please link back to my website to give credit. Thank you.

www.addinkivedesigns.com



Tutorial written and photographed by Bronwyn Eastley, Independent Stampin' Up! ® Demonstrator, Australia - <http://addinkivedesigns.com> This tutorial may not be reproduced, shared or resold in paper or electronic form (eg: Email, message, groups, pages, blogs, videos etc). However, Stampin' Up! ® Demonstrators/Paper Craft Tutors may use this tutorial as a printed reference at face to face events. All stamped images are © Stampin' Up! ®. Published October, 2019.

2. Mosaic Mood

Supplies:

Stamp Set: Beautiful Friendship

Ink: Early Espresso, Bronze Stampin' Blends Marker

Card Stock: Thick Whisper White, Copper Foil Sheets, Garden Green, Mint Macaron

DSP: Mosaic Mood Specialty

Dies: Detailed Bands, Stitched Rectangles, Seasonal Layers

Accessories: Rhinestone Basic Jewels

Tools & Adhesives: Multipurpose Liquid Glue, Tear & Tape Adhesive, Stampin' Dimensionals, Paper Trimmer/Scoring Board, Die Cutting Machine, Craft Knife, Pencil



To make a 'Copper' Rhinestone, colour a basic one with a Bronze Stampin' Blends Marker.



DSP Measurements -

- (H) 5-1/4" x (W) 1-1/2" (x4)
- (H) 5-1/4" x (W) 3" (x2)

Tutorial written and photographed by Bronwyn Eastley, Independent Stampin' Up! ® Demonstrator, Australia - <http://addinkivedesigns.com> This tutorial may not be reproduced, shared or resold in paper or electronic form (eg: Email, message, groups, pages, blogs, videos etc). However, Stampin' Up! ® Demonstrators/Paper Craft Tutors may use this tutorial as a printed reference at face to face events. All stamped images are © Stampin' Up! ®. Published October, 2019.

3. Come to Gather

Supplies:

Stamp Sets: Colorful Seasons, Magical Mermaid
Ink: Early Espresso, Cajun Craze, Merry Merlot, Pear Pizzazz

Card Stock: Thick Whisper White, Copper Foil Sheets, Mint Macaron, Pear Pizzazz, Merry Merlot, Cajun Craze, Pretty Peacock

DSP: Come to Gather

Dies: Detailed Bands, Stitched Rectangles, Seasonal Layers

Accessories: Copper Trim

Tools & Adhesives: Multipurpose Liquid Glue, Tear & Tape Adhesive, Stampin' Dimensionals, Glue Dots, Paper Trimmer/Scoring Board, Die Cutting Machine, Craft Knife, Pencil



The scalloped flap opening is on the left-hand side for this card, therefore scoring lines along the width are as follows -

- 1-3/4", 3-1/2", 4", 5-3/4"



Please note - I used the 'splatter' stamp from Magical Mermaid to stamp the leaves.

Tutorial written and photographed by Bronwyn Eastley, Independent Stampin' Up! ® Demonstrator, Australia - <http://addinkivedesigns.com> This tutorial may not be reproduced, shared or resold in paper or electronic form (eg: Email, message, groups, pages, blogs, videos etc). However, Stampin' Up! ® Demonstrators/Paper Craft Tutors may use this tutorial as a printed reference at face to face events. All stamped images are © Stampin' Up! ®. Published October, 2019.

4. Feels Like Frost

Supplies:

Stamp Sets: Frosted Foliage

Ink: Seaside Spray

Card Stock: Thick Whisper White, Seaside Spray, Silver Foil Sheets, Sparkle Glimmer Paper

DSP: Feels Like Frost 6x6 (2 sheets)

Dies: Frosted Frames

Tools & Adhesives: Multipurpose Liquid Glue, Tear & Tape Adhesive, Glue Dots, Paper Trimmer/Scoring Board, Die Cutting Machine, Craft Knife, Pencil

This card doesn't have a scalloped edge and the scoring measurements along the width are as follows - 1-3/4", 3-1/2", 4", 5-3/4".

You DO NOT need to cut flaps for the frame as the Frosted Frame is just glued down onto the 1/2" raised section. The foliage will need a slight trim on the right-hand side in order for the frame to fit neatly inside the card.



DSP Measurements -

- (H) 5-1/4" x (W) 1-1/2" (x4)
- (H) 5-1/4" x (W) 3" (x2)



Tutorial written and photographed by Bronwyn Eastley, Independent Stampin' Up! ® Demonstrator, Australia - <http://addinktivedesigns.com> This tutorial may not be reproduced, shared or resold in paper or electronic form (eg: Email, message, groups, pages, blogs, videos etc). However, Stampin' Up! ® Demonstrators/Paper Craft Tutors may use this tutorial as a printed reference at face to face events. All stamped images are © Stampin' Up! ®. Published October, 2019.